

COVENANT CENTRE

A PORTION OF THE SOUTHWEST ONE-QUARTER OF SECTION 18, TOWNSHIP 42 SOUTH, RANGE 43 EAST, PALM BEACH COUNTY, FLORIDA.

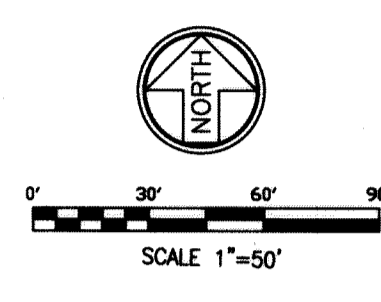
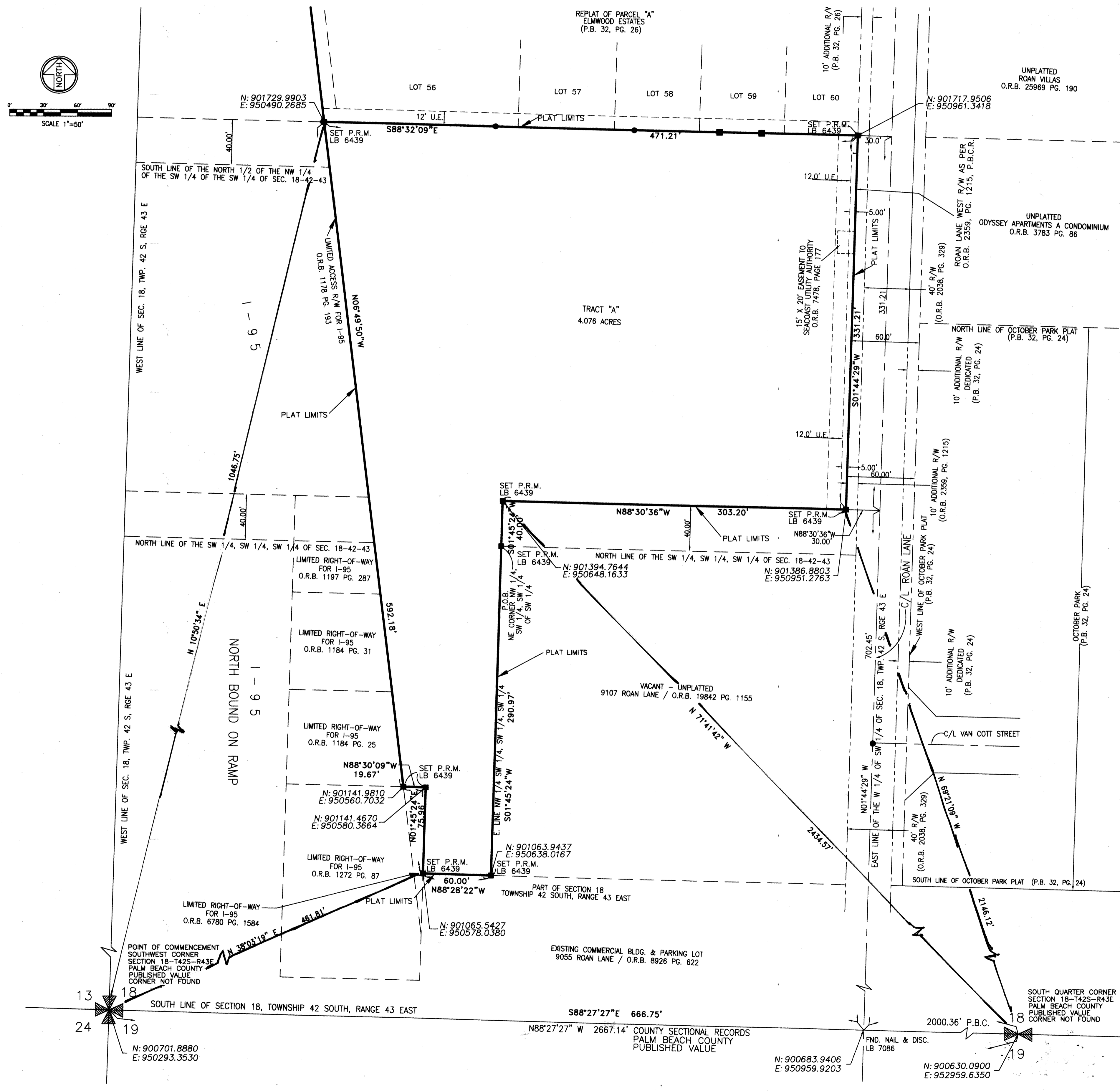
THIS INSTRUMENT WAS PREPARED BY LUIS J. ORTIZ, LS 7006 IN THE OFFICE OF BASELINE ENGINEERING AND LAND SURVEYING INC. 1400 N.W. 1st COURT, BOCA RATON, FL. 33432 (561) 417-0700

SHEET 2 OF 2

24

COUNTY OF PALM BEACH STATE OF FLORIDA

THIS PLAT WAS FILED FOR RECORD AT _____ M. THIS _____ DAY OF _____ A.D. 201 _____ AND DULY RECORDED IN PLAT BOOK _____ ON PAGES _____ THRU _____ SHARON R. BOCK CLERK AND COMPTROLLER BY: _____ DC



- LEGEND:
- A = ARC LENGTH
 - Δ = DELTA
 - FND. = FOUND
 - R = RADIUS
 - D.B. = DEED BOOK
 - L.W.D.D. = LAKE WORTH DRAINAGE DISTRICT
 - O.R.B. = OFFICIAL RECORD BOOK
 - P.B. = PLAT BOOK
 - P.B.C.R. = PALM BEACH COUNTY RECORDS
 - P.C. = POINT OF CURVATURE
 - P.C.C. = POINT OF COMPOUND CURVATURE
 - P.C.P. = PERMANENT CONTROL POINT
 - PGS. = PAGES
 - P.R.C. = POINT OF REVERSE CURVATURE
 - P.O.B. = POINT OF BEGINNING
 - P.R.M. = PERMANENT REFERENCE MONUMENT
 - "(R)" = RECORDED
 - R/W = RIGHT OF WAY
 - C/L = CENTERLINE

- SURVEYOR'S NOTES:
- BEARINGS SHOWN HEREON ARE RELATIVE TO THE SOUTH LINE OF SECTION 18, TOWNSHIP 42 SOUTH, RANGE 43 EAST (N88°27'27" W), IN ACCORDANCE WITH THE PALM BEACH COUNTY PUBLISHED VALUES.
 - THE COORDINATES SHOWN HEREON ARE BASED ON THE FLORIDA COORDINATE SYSTEM, EAST ZONE, GRID NORTH, 1983 STATE PLANE TRANSVERSE MERCATOR PROJECTION, WITH THE NORTH AMERICAN DATUM OF 1983, 1990 ADJUSTMENT AS READJUSTED BY PALM BEACH COUNTY IN 1998. THE COORDINATES ON THE GEODETIC CONTROL SHOWN HEREON MEET OR EXCEED THE LOCAL ACCURACY REQUIREMENTS OF A 2 CENTIMETER GEODETIC CONTROL SURVEY. SET PERMANENT REFERENCE MONUMENT (EXAMPLE: NORTHING 900630.0900, EASTING 950934.1500). LINEAR UNITS ARE U.S. SURVEY FEET. DIMENSIONS SHOWN HEREON ARE IN FEET AND DECIMAL PARTS THEREOF AND ARE BASED ON THE DEFINITION OF FOOT AS ADOPTED BY THE UNITED STATES BUREAU OF STANDARDS AND REFER TO THE HORIZONTAL PLANE.
 - THE DISTANCES SHOWN HEREON ARE GROUND DISTANCES, THE SCALE FACTOR USED IS 1.000041036 GROUND DISTANCE MULTIPLIED BY THE SCALE FACTOR= GRID DISTANCE. ROTATION = 00°37'58" COUNTER CLOCKWISE PLAT TO GRID.

THIS INSTRUMENT WAS PREPARED BY
 BASELINE ENGINEERING AND LAND SURVEYING, INC.
 1400 N.W. 1st COURT
 BOCA RATON, FLORIDA 33432
 (561) 417-0700
 email: info@baseline-eng.com